

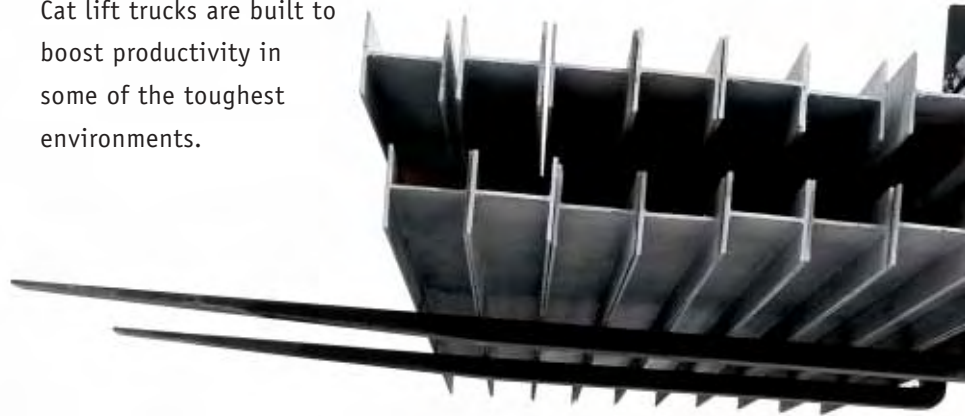
**15,500 lb Capacity Diesel  
Pneumatic Tire Lift Truck**

**CAT**® Lift  
Trucks



## More Power To You

Count on rugged Cat® lift trucks for the high performance, dependability, and comfort you need to sustain productivity and maximize value. A robust 94-horsepower engine delivers exceptional acceleration and performance with minimal noise and fuel consumption. Automatic transmission, full hydrostatic steering, and vacuum-boosted brakes help decrease operator fatigue. Easy access to internal components simplifies routine maintenance. And we offer a range of carriage, mast, and other options to fit your application. From mast to motor, Cat lift trucks are built to boost productivity in some of the toughest environments.



## In-Line, 6-Cylinder Diesel Engine

A durable 94-horsepower engine provides high torque, low noise, and reliable performance. It features 305 cubic inches of displacement and cold weather starting capabilities to -4°F.



## Efficient, Compact Design

The compact dimensions enhance the operator's ability to enter and exit more confined areas. A low, wide stance and wide drive axle design improve lateral stability in rough conditions and at high lift heights.



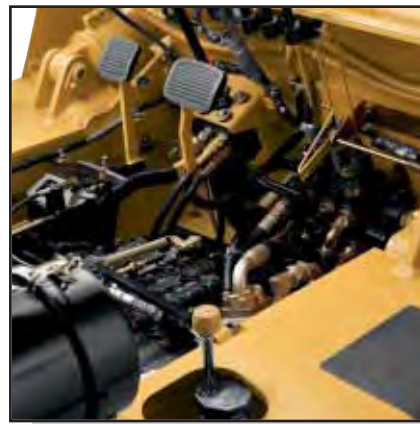


● **Toggle Switch Controls Top Speed**

For applications that require additional speed control, an easy-to-reach toggle switch is designed to lock the transmission in the lower gear.

● **Trunnion-Mounted Steer Axle**

A heavy-duty steer axle articulates up to 6° for smoother operation and stability. The large-diameter steer cylinder nests within the steer axle, helping to protect it from debris.



● **Asbestos-Free, Vacuum-Boosted Brakes**

The self-energizing, self-adjusting, hydraulic service brakes provide smooth, effective braking with nominal foot pedal pressure. The parking brake employs a separate shoe assembly on the input side of the drive axle for added dependability.



## Effortless Hydrostatic Steering

Hydrostatic power steering reduces operator effort and enhances productivity. The system includes self-aligning kingpins supported by tapered roller bearings and adjustment-free, fixed-length tie rods to help reduce maintenance requirements.



## Infinitely Adjustable Tilt Steering

The steering column allows for smooth positioning of the wheel over five inches of movement, accommodating most operator preferences and facilitating entry and exit.



## Two-Speed, Automatic-Shift Transmission

The automatic transmission and high-stall torque converter offer precision inching and smooth acceleration. An auto-shift feature automatically shifts gears up or down based on travel speed to simplify operation and enhance productivity. As a result, the lift truck always starts out in first gear—reducing premature wear on components.





## Operator's Compartment With Contoured Seat

The spacious operator's compartment includes a full-suspension, contoured seat with adjustable suspension. Controls like hydraulic levers are within easy reach.



## Masts Enhance Productivity

Due to widely spaced channels, compact lift cylinders, and strategically positioned cross members, sturdy masts enhance visibility and provide fast lift and lowering speeds to increase productivity. Four carriages are available to meet your needs, including a sideshifting, hydraulic fork-positioning carriage.

Both Simplex and Triplex masts are available in a variety of heights, with full-rated capacities to 197-inch lift height. Masts are fabricated from high-strength steel and include rollers to absorb both lateral and longitudinal forces.



**Easy Monitoring Of Functions**

The information your operators need is always close at hand with this easy-to-read instrument panel, which tilts with the steering wheel for sustained visibility.

**Optional Low-Vibration Cabs**

Operators experience all-around good visibility as well as low vibration and noise with these optional cabs, designed specifically for Cat lift trucks. Features include sliding glass windows, mechanical latches, and windshield wipers in front, back, and on top.



## Easy-To-Lift Hood

Assisted by gas cylinders, the hood is easy to open and provides quick access for daily checks and routine maintenance.

## Serviceability Under The Hood

Tool-free access to major components simplifies maintenance. The air filter, air cleaner, brake fluid reservoir, and dipsticks are easy to reach and check. A single bolt adjusts the fan belt, and a large-capacity cooling system helps protect engine components against high temperatures.



## Rugged Drive Axle

Full-floating axle shafts and a gear-type planetary final drive, supported by tapered roller bearings, minimize stress common in rough terrain applications. Final torque multiplication occurs at the wheels, instead of the differential, so torque stress on the shafts, differential, and drive axle is reduced, thereby increasing axle life.





## Ask For A Demonstration

The advantages of the 15,500 lb capacity diesel pneumatic tire lift truck become obvious with a demonstration. See strong proof that Cat Lift Trucks and your Cat lift truck dealer can offer you more productivity-driven benefits for a strong return on your equipment investment. Call for an appointment today.



# SPECIFICATIONS

CHARACTERISTICS			DP70			
1	Capacity	at rated load center	lb <i>kg</i>	15,500	7000	
2		at load center – distance	in <i>mm</i>	24	600	
3	Power	diesel, gas, LP gas		diesel		
4	Tire type	cushion, pneumatic		pneumatic		
5	Wheels (x = driven)	number front / rear		x4 / 2		
DIMENSIONS						
10	Lift	maximum fork height with rated load	in <i>mm</i>	197	5000	
11	Lift with standard	maximum fork height	in <i>mm</i>	148	3700	
12	two-stage mast	free fork height	in <i>mm</i>	7.9	200	
13	Forks	thickness x length x width	in <i>mm</i>	2.4 x 48 x 5.9	60 x 1220 x 150	
	Fork spacing	out-to-out minimum / maximum	in <i>mm</i>	15.4/65.5	390/1670	
14	Tilt	forward / backward		6 / 12		
15	Overall dimensions	length to fork face	in <i>mm</i>	143.3	3635	
16		width	standard dual drive tires	in <i>mm</i>	85.6	2175
			optional dual drive tires	in <i>mm</i>	N/A	
17		height	with lowered mast	in <i>mm</i>	115	2920
18			seat height	in <i>mm</i>	52	1320
19			to top of overhead guard	in <i>mm</i>	95.3	2420
20	with extended mast		in <i>mm</i>	196.1	4980	
21	Minimum outside turning radius		in <i>mm</i>	133.7	3395	
22	Load moment constant		in <i>mm</i>	23	585	
23	Minimum aisle – 90° stack – zero clearance w/out load		in <i>mm</i>	156.7	3980	
PERFORMANCE						
40	Speeds	travel speed loaded / empty	mph <i>km/h</i>	13.7 / 17.1	22.0 / 27.5	
41		lift speed loaded / empty	fpm <i>m/s</i>	86 / 92	.44 / .47	
42		lowering speed loaded / empty	fpm <i>m/s</i>	108 / 108	.55 / .55	
43	Drawbar pull	loaded at 1 mph (1.6 km)	lb <i>N</i>	9135	40,634	
		loaded maximum	lb <i>N</i>	12,100	52,553	
44	Gradeability	loaded at 1 mph (1.6 km)	%	26		
		maximum loaded / empty	%	35 / 21		
WEIGHT						
50	Empty		lb <i>kg</i>	20,705	9390	
51	Axle load	with rated load front / rear	lb <i>kg</i>	32,520 / 3685	14,730 / 1660	
		without load front / rear	lb <i>kg</i>	9085 / 11,620	4120 / 5270	
CHASSIS						
60	Tire size	front, standard dual drive tires	in	8.25 x 15-12PR		
		front, optional dual drive tires	in	NA		
61		rear	in	8.25 x 15-12PR		
62	Wheelbase		in <i>mm</i>	90.6	2300	
63	Tread width	front, standard dual drive tires	in <i>mm</i>	65	1650	
		front, optional dual drive tires	in <i>mm</i>	NA		
64		rear tires	in <i>mm</i>	65	1650	
65	Ground clearance	at lowest point @ mast	in <i>mm</i>	5.51	140	
66		at center of wheelbase	in <i>mm</i>	10	255	
67	Brakes	service	hydraulic w/vacuum boost			
68		parking	mechanical-hand			
POWER TRAIN						
80	manufacturer and model		Mitsubishi S6S			
81	Engine	continuous output S.A.E. gross	HP <i>kW</i>	94	70	
			at r.p.m.	2300		
82	Engine	maximum torque S.A.E. gross	lb-ft <i>kg-m</i>	223	30.8	
			at r.p.m.	1600		
83	cylinder / displacement		cu in <i>cm³</i>	6 / 305	6 / 4996	
84	Transmission	type			automatic powershift	
85		number of speeds forward / reverse			2 / 2	
86	Relief pressure	for attachments	psi <i>bar</i>	2775	190	
87	Noise level	mean value at operator's ear Leq	dB(A)	84.5		

## SAFETY STANDARDS

These trucks are designed and manufactured to meet American Society of Mechanical Engineers (ASME) B56.1, Safety Standards for powered industrial trucks.

UL-Classified by Underwriters Laboratories, Inc., as to fire hazard only; Type D Industrial Trucks.

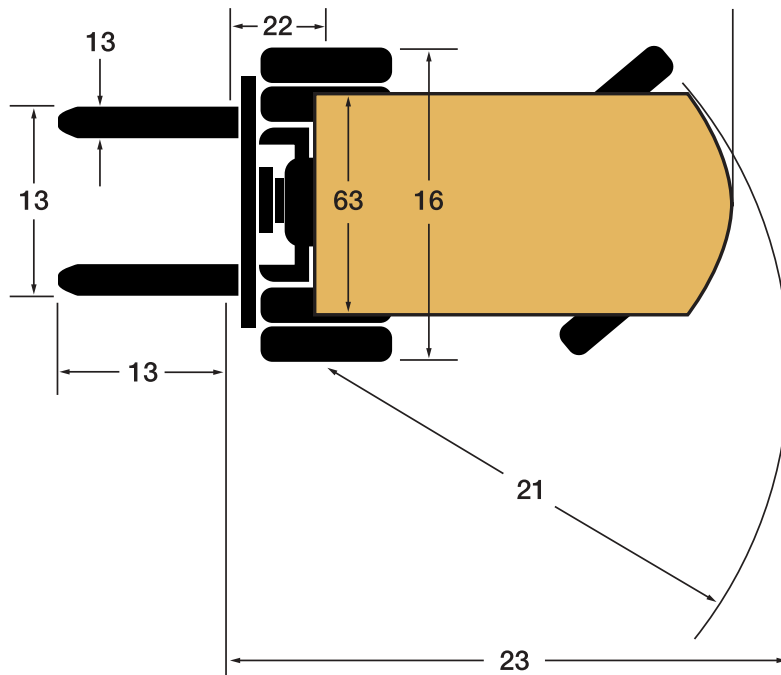
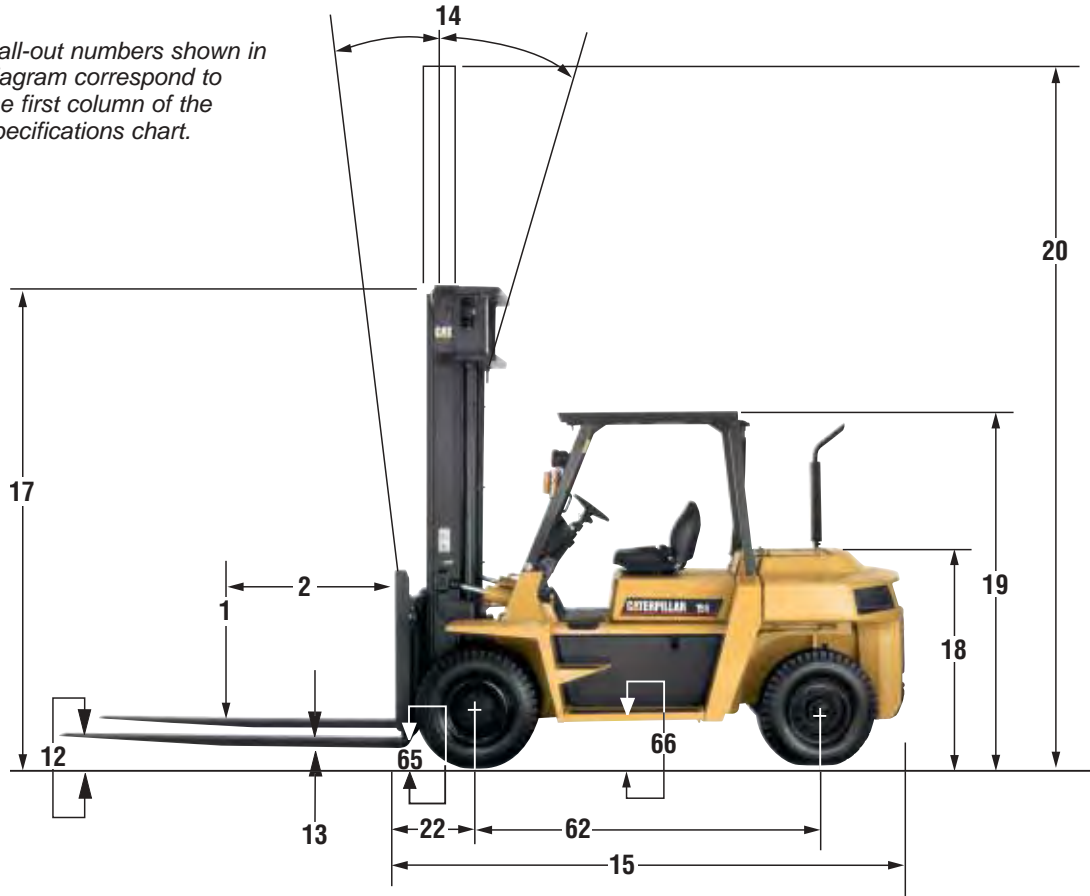
Users should be aware of, and adhere to, applicable codes and regulations regarding operator training, use, operation and maintenance of powered industrial trucks, including:

- ASME B56.1, part II.
- NFPA 505, fire safety standard for powered industrial trucks - type designations, areas of use, maintenance and operation.
- Occupational Safety and Health Administration (OSHA) regulations that may apply.

Specifications, equipment, technical data, photos and illustrations are based on information at time of printing and subject to change without notice. Some products may be shown with optional equipment.

**NOTE:** These specifications assume the use of drive axles, tires and tilt angles specified. Any modification to specifications, or any other combination of specifications made after the shipment of the truck, requires prior written approval from Mitsubishi Caterpillar Forklift America Inc. ("MCF"). (See ASME B56.1 Part II 4.2.) Also be advised that overall operating visibility may be affected by the mast configuration and mast options of your truck. Therefore, you may need to add ancillary [auxiliary] devices or modify your operating practices. Consult your dealer for further information.

Call-out numbers shown in diagram correspond to the first column of the specifications chart.





## Durability And Support

**Cat lift truck dealers put customer needs first, with the most comprehensive customer support programs in the industry.**

**Unlimited Hours Warranty** covers parts and labor for one year, regardless of service hours.

**Parts Fast or Parts Free Guarantee** ensures next-business-day delivery of parts for all brands of lift trucks or they are free, including freight.

**Free Loaner Service Guarantee** provides a lift truck until the repair is done if your lift truck is not repaired right the first time and within the quoted time.

Contact your Cat lift truck dealer for complete terms and conditions of these guarantees.

**Cat Lift Trucks** offers an extensive range of products and services. Your Cat lift truck dealer can provide options and additional visual and audible warning devices geared toward your specific applications and requirements. Operator training programs are also available to boost productivity and to help reduce the potential for product damage and personal injury.

Your Cat lift truck dealer can also provide a variety of financing and leasing options to suit the needs of your business.



**CATERPILLAR®**

**1-800-CAT-LIFT**  
**www.cat-lift.com**